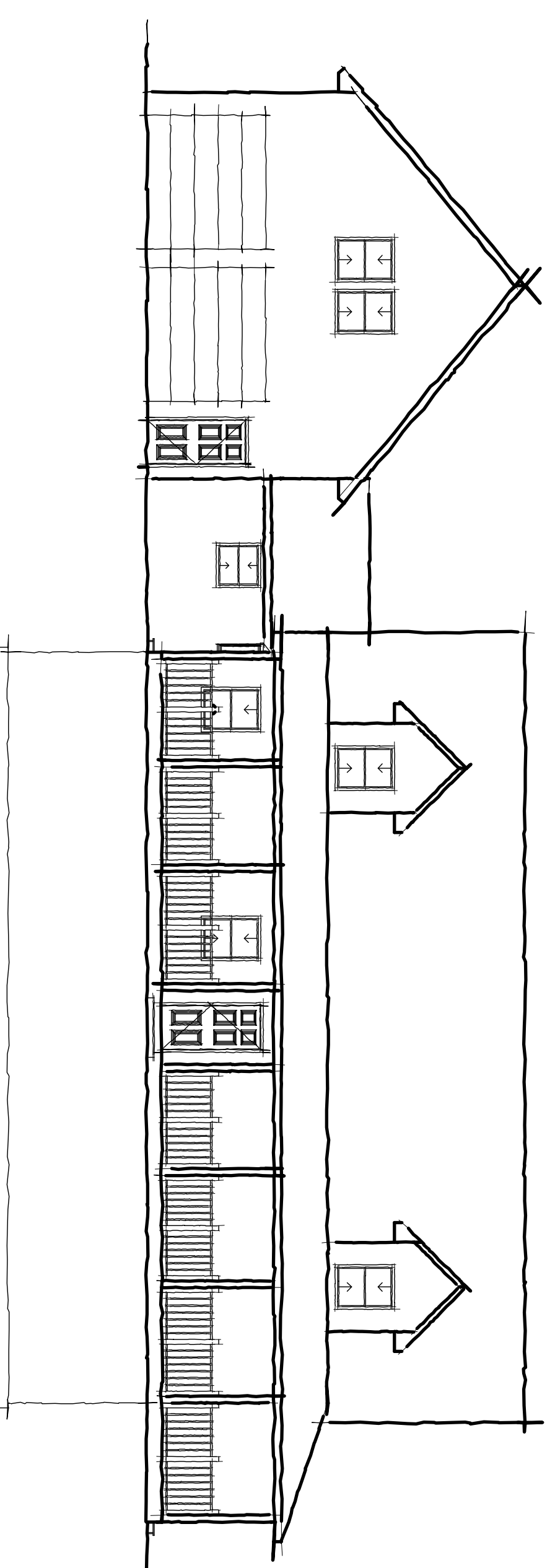


2nd
Revision

CUSTOM WOODCRAFT BUILDERS O'LEARY RESIDENCE PUTNAM COUNTY, INDIANA

NOT FOR
CONSTRUCTION

WINDOW SCHEDULE			
MARK	SIZE		Style
	WIDTH	HEIGHT	
001	3'-0"	4'-0"	Double Hung
002	3'-0"	4'-0"	Double Hung
003	3'-0"	4'-0"	Double Hung
004	3'-0"	3'-0"	Boy
005	3'-0"	3'-0"	Double Hung
006	3'-0"	4'-0"	Double Hung
007	3'-0"	4'-0"	Double Hung
008	3'-0"	4'-0"	Double Hung
009	3'-0"	4'-0"	Double Hung
010	5'-0"	4'-0"	Cosement
011	3'-0"	4'-0"	Double Hung
012	3'-0"	4'-0"	Double Hung
013	4'-0"	1'-6"	Glider
014	3'-0"	4'-0"	Double Hung
015	3'-0"	4'-0"	Double Hung
016	3'-0"	4'-0"	Double Hung
017	3'-0"	4'-0"	Double Hung
018	3'-0"	4'-0"	Double Hung
019	3'-0"	4'-0"	Double Hung
020	3'-0"	4'-0"	Double Hung
021	6'-0"	5'-6"	Picture - Right Triangle
022	6'-0"	5'-6"	Picture - Right Triangle
023	3'-0"	4'-0"	Double Hung
024	4'-0"	4'-0"	Double Hung



DWG #	DWG TITLE
A1	COVER SHEET
A2	MAIN LEVEL PLAN
A3	UPPER LEVEL PLAN
A4	BASEMENT LEVEL PLAN
A5	ELEVATIONS
A6	ELEVATIONS
A7	ROOF PLAN
A8	SITE PLAN
A9	FOUNDATION PLAN

GENERAL NOTES:

1. ALL WORK TO COMPLY WITH ALL LOCAL BUILDING CODES.
2. EMERGENCY ESCAPE AND RESCUE PER LOCAL CODE.
3. EXIST AND GENERAL EGRESS PER LOCAL CODE.
4. MECHANICAL CONTRACTOR TO SUPPLY ALL LABOR AND MATERIAL TO PERFORM ELECTRICAL WORK PER APPLICABLE CODE(S) (IBC AND LOCAL).
5. FANS, MOTORS, PANELS AND TRANSFORMERS
6. ATTIC ACCESS PER LOCAL CODE
7. STAIRWAYS PER LOCAL CODE
8. LANDINGS PER LOCAL CODE
9. HANDRAILS PER LOCAL CODE
10. MECHANICAL CONTRACTOR TO SUPPLY ALL LABOR AND MATERIAL TO PERFORM THE WORK PER LOCAL CODE(S) INCLUDING:
 - A. 90 GALLON OR MORE GAS-FIRED WATER HEATER (VERIFY SIZE W/ OWNER OR CONTRACTOR)
 - B. EXHAUST FANS FOR EXHAUST FANS, TOILETS, TUBS AND AIR-CONDITIONING SYSTEMS
 - C. DOUBLE SINK W/ GARABGE DISPOSAL, ALL SINKS PER PLAN
11. MECHANICAL CONTRACTOR TO PLACE ALL OUTLETS PER LOCAL CODE
12. PROVIDE MOISTURE RESISTANT GYPSUM WALLBOARD IN BATHROOMS AND UTILITY ROOM (GREEN BOARD)
13. CLOSETS, 1/16" PART BRD, SHELF, (1) METAL ROD (SHELF @ 88" A.F.F., 1/2 CLEATS (PAINTED))
14. BATH, MED. CABINET AT LAV, 1" P. HOLDER, TOWEL BARS (1) 24" (1) 36" ROBE HOOK ON DOOR, HOOKS AT LAV
15. KITCHEN COUNTERTOP (6) CABINET & COUNTERS DESIGNED BY OTHERS
16. PROVIDE GUTTER AND DOWNSPOUT SYSTEM AS INDICATED ON DRAWINGS VERIFY W/ BUILDER OR OWNER
17. DO NOT SCALE DRAWINGS. DIMENSIONS TAKE PRECEDENCE OVER SCALE CONDITIONS BEFORE COMMENTARY OF THE WORK.
18. CONTRACTOR AND SUBTIERS SHALL VERIFY DRAWINGS AND SITE CONDITIONS BEFORE COMMENCEMENT OF THE WORK.
19. MEASUREMENTS OF THE LOCAL BUILDING DEPARTMENT CODES & CODE
20. PREMANUFACTURED FLOOR AND ROOF SYSTEMS TO BE BY THE RESPECTIVE VENDOR USED
21. WALL SYSTEMS AS NOTED ON PLAN SHALL COMPLY WITH STATE ENERGY CODE
22. EXTERIOR WALLS ARE OR 2x8s @ 16" O.C.
23. INTERIOR WALLS ARE 2x4s @ 16" O.C.
24. DOOR BETWEEN GARAGE AND HOUSE TO BE 20 MIN. FIRE RATED
25. POST PLANS AND PERMIT ON JOB SITE.

ELECTRICAL NOTES

1. MECHANICAL CONTRACTOR TO SUPPLY ALL LABOR AND MATERIAL TO PERFORM ELECTRICAL WORK PER APPLICABLE CODE(S) (IBC AND LOCAL).
 2. INCLUDE ALL FAULTLIGHTS, LIGHTS, SMOKE ALARMS, OUTLETS FANS, MOTORS, PANELS AND TRANSFORMERS
 3. GENERAL CONTRACTOR TO SUPPLY ALL OTHER FIXTURES AS NOTED BY OWNER
 4. ELECTRICAL CONTRACTOR TO PLACE ALL OUTLETS PER LOCAL CODE
- ### MECHANICAL
1. MECHANICAL CONTRACTOR TO SUPPLY ALL LABOR AND MATERIAL TO PERFORM THE WORK PER LOCAL CODE(S) INCLUDING:
 - A. 90 GALLON OR MORE GAS-FIRED WATER HEATER (VERIFY SIZE W/ OWNER OR CONTRACTOR)
 - B. EXHAUST FANS FOR EXHAUST FANS, TOILETS, TUBS AND AIR-CONDITIONING SYSTEMS
 - C. DOUBLE SINK W/ GARABGE DISPOSAL, ALL SINKS PER PLAN
 2. BOILER PLATFORM TO BE 18" ABOVE FLOOR
- ### EGRESS AND BASEMENTS
1. EGRESS AND BASEMENTS
 2. EGRESS AND BASEMENTS
 3. FOURTH STORY MUST HAVE ONE OPERABLE WINDOW OR EXTERIOR DOOR APPROVED FOR ESCAPE OR RESCUE. ALL ESCAPE OR RESCUE WINDOWS SHALL HAVE MIN. NET CLEAR OPENING OF 5/7 90. FT. MIN. NET CLEAR OPENING HEIGHT IS 24". THE MIN. NET CLEAR OPENING WIDTH IS 20". THE MAX SILL HEIGHT IS 44" FROM THE FLOOR.
- ### OUTSIDE WALL PLUMBING
1. NO P-TAP WATER OR HEAT LINES ALLOWED IN OUTSIDE WALLS COMMON TO UNHEATED GARAGE. ATTIC SPACE IS CONSIDERED OUTSIDE WALL.
- ### DRYER VENT
1. ROOMS THAT HAVE CLOTHES DRYERS MUST HAVE A MIN. OF 100 SQ. INCHES OF MAKEUP AIR. DRYER DUCTS SHALL NOT EXCEED 100 FEET IN LENGTH AND 2 FEET DEDUCTED FOR EACH 90 DEGREE ELBOW IN EXCESS OF 2 FEET. DUCT MATERIAL IS NOT APPROVED EXCEPT FOR CONNECTORS
- ### SITE WORK
1. IF ADVERSE SOIL CONDITIONS EXIST AT BUILDING SITE, ENGINEERED FOUNDATION SHALL BE PROVIDED.
 2. ENGINEERING SERVICES HAVE NOT BEEN PROVIDED REGARDING THIS PLAN.

DOOR AND FRAME SCHEDULE			
MARK	DOOR SIZE		Style
	WD	HGT	
001	3'-0"	6'-8"	Hinged - Single - Exterior Panel
002	4 @ 1'-3"	6'-8"	BiFold - Double
003	2'-6"	6'-8"	Hinged - Single - 6 Panel
004	2'-6"	6'-8"	Hinged - Single - 6 Panel
005	2'-6"	6'-8"	Hinged - Single - 6 Panel
006	3'-0"	6'-8"	Hinged - Single - 6 Panel
007	3'-0"	6'-8"	Hinged - Single - Exterior Panel
008	3'-0"	6'-8"	Hinged - Single - Exterior Panel
009	9'-0"	8'-0"	Overhead - Sectional
010	9'-0"	8'-0"	Overhead - Sectional
011	3'-0"	6'-8"	Hinged - Single - Exterior Panel
012	2'-6"	6'-8"	Hinged - Single - 6 Panel
013	PR 3'-0"	6'-8"	Hinged - Double - Exterior-French
014	PR 3'-0"	6'-8"	Hinged - Double - Exterior-French
015	PR 2'-6"	6'-8"	Hinged - Double - Exterior FULL LT
016	2'-6"	6'-8"	Hinged - Single - 6 Panel
017	2'-6"	6'-8"	Pocket - Single
018	2'-6"	6'-8"	Pocket - Single
019	PR 1'-0"	6'-8"	Hinged - Double
020	2'-4"	6'-8"	Hinged - Single - 6 Panel
021	2'-6"	6'-8"	Hinged - Single - 6 Panel
022	2'-6"	6'-8"	Hinged - Single - 6 Panel
023	3'-0"	6'-8"	Hinged - Single - 6 Panel
024	4 @ 1'-0"	6'-8"	BiFold - Double
025	4 @ 1'-0"	6'-8"	BiFold - Double
026	4 @ 1'-0"	6'-8"	BiFold - Double
027	2'-0"	6'-8"	Hinged - Single - 6 Panel
028	1'-8"	4'-8"	Hinged - Single - 6 Panel
029	2'-6"	6'-8"	Hinged - Single - 6 Panel
030	4 @ 1'-0"	6'-8"	BiFold - Double
031	4 @ 1'-0"	6'-8"	BiFold - Double
032	2'-6"	6'-8"	Hinged - Single - 6 Panel
033	3'-0"	6'-8"	Hinged - Single - 6 Panel
034	PR 3'-0"	6'-8"	Hinged - Single - 6 Panel
035	PR 3'-0"	6'-8"	Hinged - Double - 6 Panel
036	PR 3'-0"	6'-8"	Hinged - Double - Exterior
037	3'-0"	6'-8"	Hinged - Single - 6 Panel

UNFINISHED AREAS

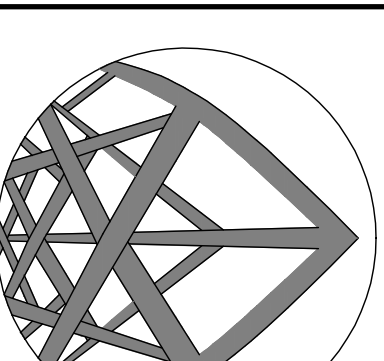
SPACE	AREA
BASEMENT SF	1466.81 SF
BONUS ROOM SF	634.29 SF
GARAGE SF	678.71 SF
	2779.81 SF

LIVING SQUARE FOOTAGE TABLE

SPACE	AREA
MAIN FLOOR SF	1710.20 SF
UPPER FLOOR SF	1081.03 SF
	2791.23 SF

CUSTOM WOODCRAFT BUILDERS O'LEARY RESIDENCE COVER SHEET

Custom
Woodcraft
Builders



10743 Hoosier Road
Fishers IN 46037
P: 317.596.5966
F: 317.869.1295

REVISIONS	
A	
B	
C	
D	
E	
F	
G	
H	
Q	

DATE: 10-20-08
DRAWN BY: JSC
CHECKED BY: JSC
DATE: 08/05
SCALE: 1/4" = 1'-0"
PROJECT: AI